

## **Historic, Archive Document**

Do not assume content reflects current scientific knowledge, policies, or practices.





62.51

F. W. BARTEDES,  
Pres. and Treas.

FRANK T. EMERSON,  
Sec'y and Gen'l Mgr.

Apr 25 1895

THE  
Western Seed and Irrigation Co.  
WATERLOO, NEB.

Orcutt Seed & Plant Co,  
Orcutt  
Cal.

Seed Growers for the Wholesale Trade Only.

Over 2,000 Acres in Cultivation Under Irrigation.

LIBRARY  
RECEIVED  
★ JUN 18 1923 ★  
U. S. Department of Agriculture.

# SPECIAL CONTRACT OFFER

OF

# SEED CORN and VINE SEEDS

## ~~~~CROP OF 1895~~~~

DEAR SIR:—We beg to offer you the following Special Prices, at which we will contract to grow for you the coming season the following named seeds, all of which are guaranteed to be of the highest grade in quality and purity possible to be produced.

Prices quoted are for quantities of not less than 25 pounds of a single variety. For quantities of 10 to 25 pounds of a single variety, add 2 cents per pound to price quoted. For quantities of less than 10 pounds of a single variety add 5 cents per pound to price quoted.

If you will enter in columns below given the different quantities you wish to have grown and return this sheet to us, we will then execute contract in duplicate, in usual form, and submit same to you for your signature. This offer is for immediate acceptance only.

Delivery f. o. b. track, Waterloo, on or before January 15th, 1896.

Terms of payment. viz:—By acceptance payable 60 days from date of shipment.

| QUANTITY BUSH.                | SWEET CORN.                     | CROP NO. | PRICE PER BUSH. | QUANTITY BUSH.                 | SWEET CORN.—Con               | CROP NO.           | PRICE PER BUSH. |
|-------------------------------|---------------------------------|----------|-----------------|--------------------------------|-------------------------------|--------------------|-----------------|
| <b>EXTRA EARLY VARIETIES.</b> |                                 |          |                 | <b>MEDIUM EARLY VARIETIES.</b> |                               |                    |                 |
| .....                         | Burpee's First of All.....      | 501      | 90              | .....                          | Champion.....                 | 520                | 80              |
| .....                         | Dreer's First of All.....       | 502      |                 | .....                          | Crosby's (Conn. Strain).....  | 521                |                 |
| .....                         | Red Cory.....                   | 503      |                 | .....                          | Early Adams.....              | 522                |                 |
| .....                         | White Cory.....                 | 504      |                 | .....                          | Honey.....                    | 523                |                 |
| .....                         | First Crop.....                 | 505      |                 | .....                          | Pee and Kay.....              | 524                |                 |
| .....                         | Marblehead.....                 | 506      |                 | .....                          | Shaker's Early.....           | 525                |                 |
| .....                         | Extra Early Adams.....          | 507      |                 | .....                          | Moore's Concord.....          | 526                |                 |
| .....                         | Burbank's Ey. Maine.....        | 508      |                 | .....                          | New England, Eight Rowed..... | 527                |                 |
| .....                         | Crosby's (Original Strain)..... | 509      |                 | .....                          | Old Colony.....               | 528                |                 |
| .....                         | Chicago Market.....             | 510      |                 | 80                             | .....                         | Mammoth Early..... |                 |
| .....                         | Early Essex.....                | 511      | .....           |                                | Black Mexican.....            | 530                |                 |
| .....                         | Perry's Hybrid.....             | 512      | .....           |                                | Potter's Excelsior.....       | 531                |                 |
| .....                         | Bonanza.....                    | 513      | .....           |                                | Squantum.....                 | 532                |                 |
| .....                         | Minnesota.....                  | 514      | .....           |                                | Hickox Improved.....          | 533                |                 |
| .....                         | .....                           | 515      | .....           |                                | Russell's Prolific.....       | 534                |                 |
| .....                         | .....                           | 516      | .....           |                                | None Such.....                | 535                |                 |
| .....                         | .....                           | 517      | .....           |                                | Stabler's Pedigree.....       | 536                |                 |
| .....                         | .....                           | 518      | .....           |                                | .....                         | 537                |                 |
| .....                         | .....                           | 519      | .....           | .....                          | 538                           |                    |                 |



| QUANTITY BUSH.                 | SWEET CORN.—Con.                                    | CROP NO. | PRICE PER BUSH. | QUANTITY LBS.                      | CUCUMBER.                          | CROP NO. | PRICE PER LB. |
|--------------------------------|---|----------|-----------------|------------------------------------|------------------------------------|----------|---------------|
| <b>LATE VARIETIES.</b>         |   |          |                 |                                    | Improved White Spine               | 587      |               |
|                                | Mammoth   | 539      | .80             | Evergreen White Spine              | 588                                |          |               |
|                                | Egyptian  | 540      |                 | Extra Long White Spine             | 589                                |          |               |
|                                | Stowell's Evergreen                                 | 541      | .90             | Nichol's Medium Green              | 590                                |          |               |
|                                | Stowell's Evergreen, Extra Select'd                 | 542      |                 | Westerfield's Chicago Pickling     | 591                                |          |               |
|                                | Zig-Zag Evergreen                                   | 543      | .65             | Boston Pickling                    | 592                                | .16      |               |
|                                | Henderson's Red Cob Evergreen                       | 544      |                 | Jersey Pickling                    | 593                                |          |               |
|                                | Livingston's Red Cob Evergreen                      | 545      | .100            | Green Prolific Pickling            | 594                                |          |               |
|                                | Everbearing   | 546      |                 | Extra Early Green Prolific         | 595                                |          |               |
|                                | Gold Coin   | 547      | .65             | Thorburn's Commercial Pickle       | 596                                |          |               |
|                                | Improved Ruby                                       | 548      |                 | Livingston's Evergreen             | 597                                |          |               |
|                                | Ne Plus Ultra                                       | 549      | .18             | Everbearing                        | 598                                |          |               |
|                                | Country Gentleman                                   | 550      |                 | Tailby's Hybrid                    | 599                                |          |               |
|                                | Evergreen Sweet Fodder                              | 551      | .35             | Improved Long Green                | 600                                |          |               |
|                                |   | 552      |                 | Long Green Turkey                  | 601                                |          |               |
|                                |   | 553      | .40             | White Dutch                        | 602                                |          |               |
|                                |   | 554      |                 | White Pearl                        | 603                                |          |               |
|                                |   | 555      | .18             | Cool and Crisp                     | 604                                |          |               |
|                                |   | 556      |                 | Japanese Climbing                  | 605                                |          |               |
| <b>FIELD CORN.</b>             |   |          |                 |                                    | Benary's Half Long Green, Prickly  | 606      |               |
| <b>CANADA FLINT VARIETIES.</b> |   |          |                 |                                    | White Wonder                       | 607      |               |
|                                | Compton's Early                                     | 557      | .55             | Albino                             | 608                                |          |               |
|                                | Early Eight Rowed, Yellow                           | 558      |                 | Fordhook White Spine               | 609                                |          |               |
|                                | Longfellow, Yellow                                  | 559      | .35             | West India Gherkin                 | 610                                |          |               |
|                                | Angel of Midnight, Yellow                           | 560      |                 | Giant Pera                         | 611                                |          |               |
|                                | Sandford White                                      | 561      | .40             | War Club                           | 612                                |          |               |
|                                | Thoroughbred White                                  | 562      |                 | Snake                              | 613                                |          |               |
|                                |   | 563      | .50             | Parisian Pickling                  | 614                                |          |               |
|                                |   | 564      |                 | Extra Long Green Giant             | 615                                |          |               |
|                                |   | 565      | .45             | New Giant White                    | 616                                |          |               |
|                                |   |          |                 | New Extra Early Long Green         | 617                                |          |               |
|                                |   |          | .45             |                                    | 618                                |          |               |
|                                |   |          |                 |                                    | 619                                |          |               |
|                                |   |          | .45             |                                    | 620                                |          |               |
|                                |   |          |                 |                                    | 621                                |          |               |
| <b>DENT VARIETIES.</b>         |   |          |                 |                                    | <b>MUSK MELON.—Green Fleshed.*</b> |          |               |
|                                | Minnesota King, Yellow                              | 566      | .50             | *Extra Early Green Citron          | 622                                |          |               |
|                                | King of the Earliest, Yellow                        | 567      |                 | *Extra Early Jenny Lind            | 623                                |          |               |
|                                | Pride of the North, Yellow                          | 568      | .45             | *Extra Early Hackensack            | 624                                |          |               |
|                                | Improved Leaming, Yellow                            | 569      |                 | *Early Prolific Nutmeg             | 625                                |          |               |
|                                | Mastodon, Yellow                                    | 570      | .16             | *Early Netted Gem, Burpee's Strain | 626                                |          |               |
|                                | Golden Beauty, Yellow                               | 571      |                 | *Early Netted Chicago Little Gem   | 627                                |          |               |
|                                | Champion, White Pearl                               | 572      | .15             | *Large Green Citron                | 628                                |          |               |
|                                |   | 573      |                 | Surprise                           | 629                                |          |               |
|                                |   | 574      | .15             | *White Japan                       | 630                                |          |               |
|                                |   | 575      |                 | Improved Orange Christina          | 631                                |          |               |
|                                |   |          | .15             | *Large Hackensack                  | 632                                |          |               |
|                                |   |          |                 | *Casaba                            | 633                                |          |               |
|                                |   |          | .15             | Imp. Round Yellow Cantaloupe       | 634                                |          |               |
|                                |   |          |                 | Long Yellow Cantaloupe             | 635                                |          |               |
|                                |   |          | .15             | *Bay View                          | 636                                |          |               |
|                                |   |          |                 | *Montreal Market                   | 637                                |          |               |
|                                |   |          | .15             | Baltimore or Acme                  | 638                                |          |               |
|                                |   |          |                 | Perfection                         | 639                                |          |               |
| QUANTITY LBS.                  | <b>CUCUMBER.</b>                                    |          | PRICE PER LB    |                                    |                                    |          |               |
|                                | Early Russian                                       | 576      | .16             |                                    |                                    |          |               |
|                                | Extra Early Siberian                                | 577      |                 |                                    |                                    |          |               |
|                                | Extra Early Seedling                                | 578      | .16             |                                    |                                    |          |               |
|                                | Early Cluster                                       | 579      |                 |                                    |                                    |          |               |
|                                | Early Frame   | 580      | .16             |                                    |                                    |          |               |
|                                | Early Short Green                                   | 581      |                 |                                    |                                    |          |               |
|                                | Arlington Early White Spine                         | 582      | .16             |                                    |                                    |          |               |
|                                | Arlington White Spine, }<br>Hill's Forcing Strain } | 583      |                 |                                    |                                    |          |               |
|                                | Bismarck White Spine                                | 584      | .16             |                                    |                                    |          |               |
|                                | Boston Market White Spine                           | 585      |                 |                                    |                                    |          |               |
|                                | Peerless White Spine                                | 586      |                 |                                    |                                    |          |               |



-- THE --

# Western Seed and Irrigation Co.

WATERLOO, NEB.

SEED GROWERS FOR THE WHOLESALE TRADE ONLY.

SPECIALTIES:

SELECTED SEED  
SWEET CORN  
AND FIELD CORN

CUCUMBER  
MUSK AND WATERMELON  
PUMPKIN

SQUASH  
BEET AND  
ONION SEED

Waterloo, Neb. \_\_\_\_\_ 189\_\_\_\_\_

Dear Sir:--We have as yet received no response to our contract offer of Corn and Vine Seeds, Crop '95, mailed you in February.

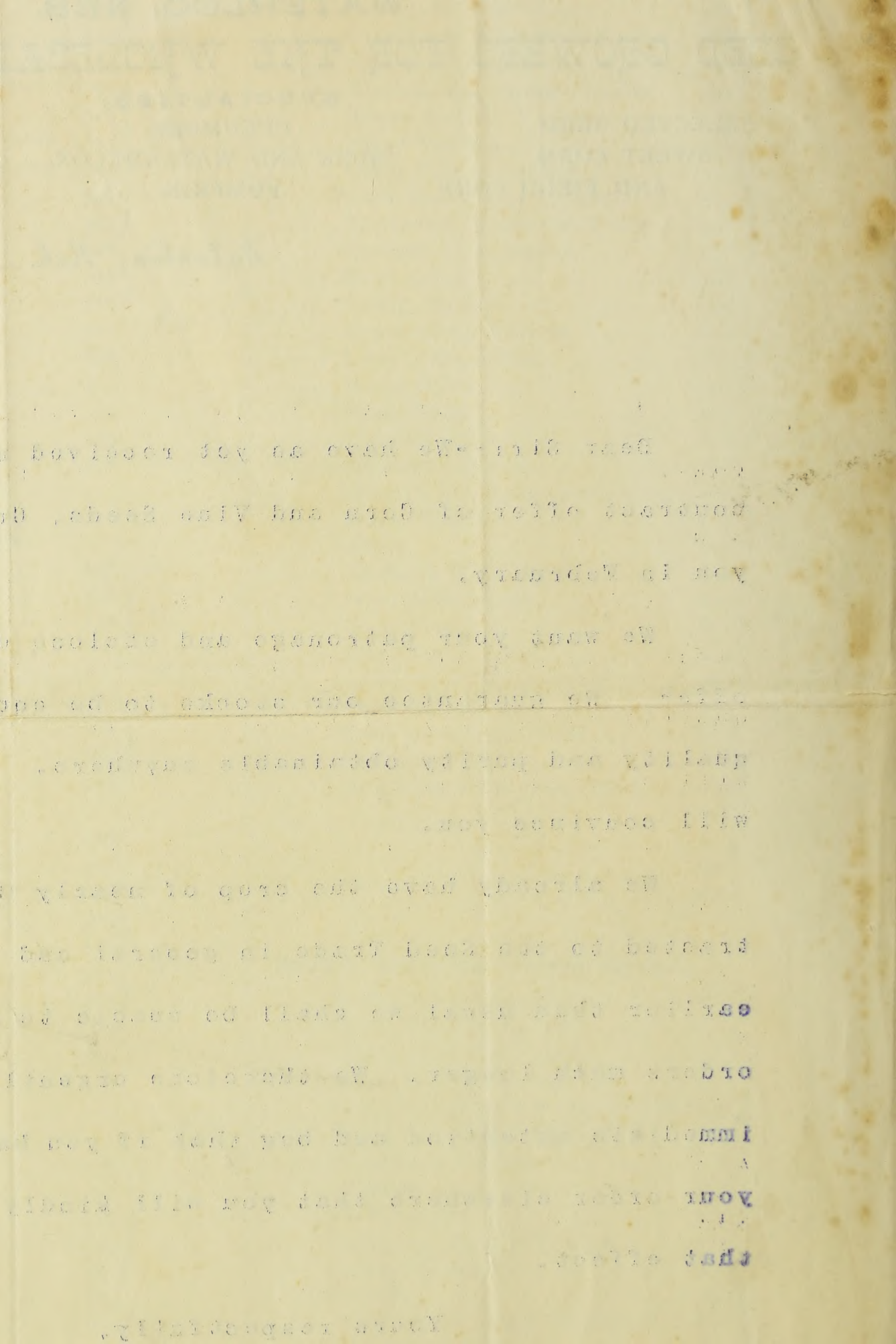
We want your patronage and enclose duplicate contract offer. We guarantee our stocks to be equal to any in quality and purity obtainable anywhere. A trial order will convince you.

We already have the crop of nearly 2,000 acres contracted to the Seed Trade in general and as our spring is earlier than usual we shall be unable to book additional orders much longer. We therefore urgently solicit your immediate attention and beg that if you have already placed your order elsewhere that you will kindly advise us to that effect.

Yours respectfully,

WESTERN SEED AND IRRIGATION CO.





LOWELL EMBERSON,  
President and Treasurer.

FRANK T. EMBERSON,  
Secretary and General Manager

SEED CORN

ALL STANDARD SWEET  
and FIELD VARIETIES.

VINE SEEDS

- CUCUMBER,
- MUSK MELON,
- WATER MELON,
- PUMPKIN,
- SQUASH.

WESTERN SEED & IRRIGATION COMPANY,  
SEED GROWERS FOR THE WHOLESALE TRADE.

— THE —

WATERLOO, NEBRASKA, JAN 31 1903 1903.

Orcutt Seed & Plant Co.,  
San Diego, Cal.

Gentlemen:—

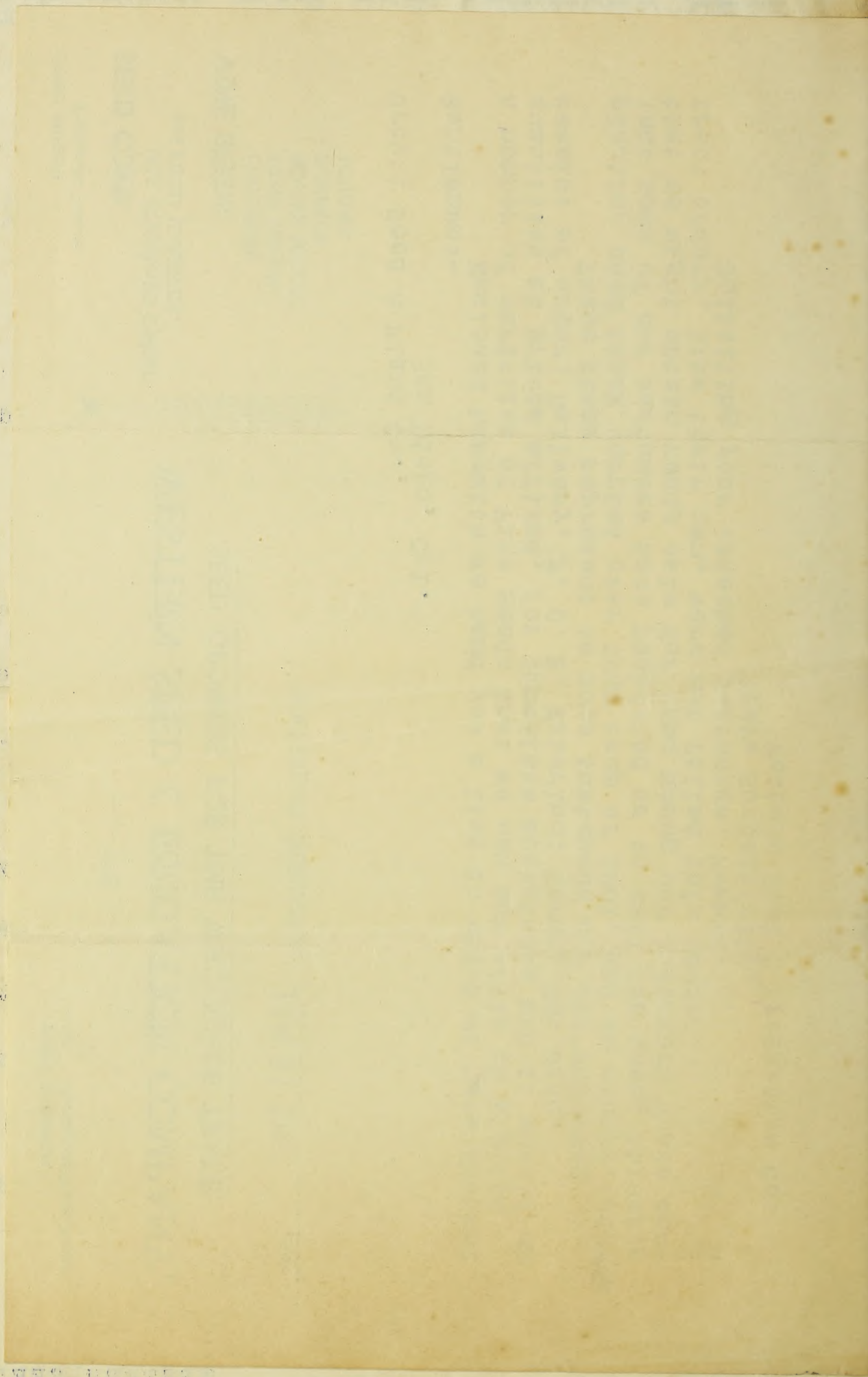
Enclosed herewith we hand you a list in which we have checked a number of varieties of Vine Seeds that we can now offer in limited quantities at prices affixed, for immediate acceptance and if unsold on receipt of order; Delivery, F. O. B. Waterloo; Terms, Net Cash.

These items represent in some instances our own reserved planting seed stock carried over from crop of 1901, and in others, stocks that some of our customers have requested us to sell for them, thinking that we might obtain ready sale for same among our customers whose con- tract orders, like their own, were not filled this season.

Soliciting your esteemed patronage, Remain,

Yours Respectfully,  
Western Seed & Irrigation Co.





... of ...  
... of ...  
... ..

... ..  
... ..

... ..

... ..

... ..

... ..

... ..

... ..

... ..



| QUANTITY<br>LBS. | M. MELON.—Con.                   | CROP<br>NO. | PRICE PER<br>LB. |
|------------------|----------------------------------|-------------|------------------|
| .....            | California Nectar .....          | 640         | } 15             |
| .....            | Princess .....                   | 641         |                  |
| .....            | *Pineapple .....                 | 642         |                  |
| .....            | *Champion Market .....           | 643         |                  |
| .....            | Miller's Cream .....             | 644         |                  |
| .....            | *Chicago Market .....            | 645         |                  |
| .....            | Emerald Gem .....                | 646         |                  |
| .....            | Osage .....                      | 647         |                  |
| .....            | *Skillman's Netted .....         | 648         |                  |
| .....            | Banana .....                     | 649         |                  |
| .....            | *Maule's Superior .....          | 650         |                  |
| .....            | Vick's Irondequoit .....         | 651         |                  |
| .....            | Perfected Delmonico .....        | 652         |                  |
| .....            | *Columbus .....                  | 653         |                  |
| .....            | *Netted Beauty .....             | 654         |                  |
| .....            | Banquet .....                    | 655         |                  |
| .....            | *Tip-Top .....                   | 656         |                  |
| .....            | *Jersey Belle .....              | 657         |                  |
| .....            | Shumway's Giant .....            | 658         |                  |
| .....            | Thorburn's New Giant .....       | 659         |                  |
| .....            | *Giant Chicago Market .....      | 660         |                  |
| .....            | *Melon or Vine Peach .....       | 661         |                  |
| .....            | *Superb .....                    | 662         |                  |
| .....            | Persian Monarch .....            | 663         |                  |
| .....            | *Long Island Beauty .....        | 664         |                  |
| .....            | *Melrose .....                   | 665         |                  |
| .....            | *Ferry's Cosmopolitan .....      | 666         |                  |
| .....            | *Green Fleshed Osage .....       | 667         |                  |
| .....            | *Newport .....                   | 668         |                  |
| .....            | *Southern Beauty .....           | 669         |                  |
| .....            | Extra Early Giant Prolific ..... | 670         |                  |
| .....            | .....                            | 671         |                  |
| .....            | .....                            | 672         |                  |
| .....            | .....                            | 673         |                  |

**WATER MELON.**

|       |  |     |      |
|-------|--|-----|------|
| ..... | Vick's Early .....                     | 674 | } 14 |
| ..... | Phinney's Early .....                  | 675 |      |
| ..... | Kolb's Gem .....                       | 676 |      |
| ..... | Dixie .....                            | 677 |      |
| ..... | Mountain Sweet .....                   | 678 |      |
| ..... | Pride of Georgia .....                 | 679 |      |
| ..... | Mountain Sprout .....                  | 680 |      |
| ..... | Dark Icing or Ice Rind .....           | 681 |      |
| ..... | Light Icing .....                      | 682 |      |
| ..... | Peerless .....                         | 683 |      |
| ..... | Cuban Queen .....                      | 684 |      |
| ..... | Black Spanish (black seed) .....       | 685 |      |
| ..... | Landreth's Boss .....                  | 686 |      |
| ..... | Mammoth Ironclad .....                 | 687 |      |
| ..... | Seminole .....                         | 688 |      |
| ..... | Green and Gold .....                   | 689 |      |
| ..... | Gray Monarch or Long White Icing ..... | 690 |      |
| ..... | Florida Favorite .....                 | 691 |      |
| ..... | Georgia Rattlesnake .....              | 692 |      |

| QUANTITY<br>LBS. | W. MELON.—Con.                              | CROP<br>NO. | PRICE PER<br>LB. |
|------------------|---|-------------|------------------|
| .....            | Kentucky Wonder (red seed) .....            | 693         | } 14             |
| .....            | Delaware .....                              | 694         |                  |
| .....            | Citron, for preserves, (red seed) .....     | 695         |                  |
| .....            | Citron, preserves, Colo, (green seed) ..... | 696         |                  |
| .....            | Fordhook .....                              | 697         |                  |
| .....            | Ruby Gold .....                             | 698         |                  |
| .....            | Girardeau's New Favorite .....              | 699         |                  |
| .....            | Hungarian Honey .....                       | 700         |                  |
| .....            | Volga .....                                 | 701         |                  |
| .....            | Orange .....                                | 702         |                  |
| .....            | Stoke's Extra Early .....                   | 703         |                  |
| .....            | Golden Honey .....                          | 704         |                  |
| .....            | Prize Jumbo .....                           | 705         |                  |
| .....            | Jones' Jumbo .....                          | 706         |                  |
| .....            | Cole's Early .....                          | 707         |                  |
| .....            | Ferry's Sweetheart .....                    | 708         |                  |
| .....            | Hoosier King .....                          | 709         |                  |
| .....            | Duke Jones .....                            | 710         |                  |
| .....            | White Queen .....                           | 711         |                  |
| .....            | .....                                       | 712         |                  |
| .....            | .....                                       | 713         |                  |

**PUMPKIN.**

|       |                                  |     |      |
|-------|----------------------------------|-----|------|
| ..... | Large Cheese .....               | 714 | } 17 |
| ..... | Improved Cashaw .....            | 715 |      |
| ..... | Small Sweet or Sugar .....       | 716 |      |
| ..... | Negro or Nantucket .....         | 717 |      |
| ..... | Quaker Pie .....                 | 718 |      |
| ..... | Tennessee Sweet Potato .....     | 719 |      |
| ..... | New Crookneck Japanese Pie ..... | 720 |      |
| ..... | Jonathan .....                   | 721 |      |
| ..... | New Calhoun .....                | 722 |      |
| ..... | Winter Luxury .....              | 723 |      |
| ..... | Golden Oblong .....              | 724 |      |
| ..... | Ferry's Pie .....                | 725 |      |
| ..... | Gray Boulogne .....              | 726 |      |
| ..... | Mammoth Etampes .....            | 727 |      |
| ..... | Mammoth Potiron .....            | 728 |      |
| ..... | King of the Mammoths .....       | 729 |      |
| ..... | Mammoth Tours .....              | 730 |      |
| ..... | Dunkard .....                    | 731 |      |
| ..... | Connecticut Field .....          | 732 |      |
| ..... | Kentucky Field .....             | 733 |      |
| ..... | .....                            | 734 |      |
| ..... | .....                            | 735 |      |
| ..... | .....                            | 736 |      |
| ..... | .....                            | 737 |      |

**SQUASH.—Summer.**

|       |                                   |     |      |
|-------|-----------------------------------|-----|------|
| ..... | Early White Bush Scallop .....    | 738 | } 16 |
| ..... | Early Yellow Bush Scallop .....   | 739 |      |
| ..... | Early Summer Crookneck .....      | 740 |      |
| ..... | Mammoth White Bush Scallop .....  | 741 |      |
| ..... | Mammoth Yellow Bush Scallop ..... | 742 |      |
| ..... | Mammoth Summer Crookneck .....    | 743 |      |
| ..... | Mammoth Summer Straightneck ..... | 744 |      |
| ..... | New Golden Custard Scallop .....  | 745 |      |



| QUANTITY<br>LBS. | SQUASH.—Winter.              | CROP<br>NO. | PRICE PER<br>LB. | QUANTITY<br>LBS. | SQUASH.—Winter.             | CROP<br>NO. | PRICE PER<br>LB. |
|------------------|------------------------------|-------------|------------------|------------------|-----------------------------|-------------|------------------|
| .....            | Boston Marrow.....           | 746         | } .15            | .....            | Faxon.....                  | 764         | } .20            |
| .....            | Improved Orange Marrow.....  | 747         |                  | .....            | Fordhook.....               | 765         |                  |
| .....            | Early Prolific Marrow.....   | 748         |                  | .....            | White Chestnut.....         | 766         |                  |
| .....            | American Turban.....         | 749         |                  | .....            | Frame's Sweet Nut.....      | 767         |                  |
| .....            | Low's Essex Hybrid.....      | 750         |                  | .....            | Large Mexican Banana.....   | 768         |                  |
| .....            | Warren's Essex Hybrid.....   | 751         | } .16            | .....            | Long Island White Bush..... | 769         | } .25            |
| .....            | Bay State.....               | 752         |                  | .....            | Henderson's Delicata.....   | 770         |                  |
| .....            | Butman.....                  | 753         |                  | .....            | Chicago Warty Hubbard.....  | 771         |                  |
| .....            | Hubbard (selected).....      | 754         |                  | .....            | Mammoth Hubbard.....        | 772         |                  |
| .....            | Pike's Peak or Sibley.....   | 755         |                  | .....            | White Summer Crookneck..... | 773         |                  |
| .....            | Marblehead.....              | 756         | } .20            | .....            | Ferry's Green Mountain..... | 774         | } .40            |
| .....            | Canada Winter Crookneck..... | 757         |                  | .....            | Leonard's Golden Heart..... | 775         |                  |
| .....            | Large Winter Crookneck.....  | 758         |                  | .....            | .....                       | 776         |                  |
| .....            | Perfect Gem.....             | 759         |                  | .....            | .....                       | 777         |                  |
| .....            | Pineapple.....               | 760         |                  | <b>GOURDS.</b>   |                             |             |                  |
| .....            | Eng. Veg. Marrow.....        | 761         | .....            | Dipper.....      | 778                         | } .40       |                  |
| .....            | Mammoth Chili.....           | 762         | .....            | Nest Egg.....    | 779                         |             |                  |
| .....            | Cocoanut.....                | 763         | .....            | .....            | 780                         |             |                  |

F. W. BARTELDES,  
President and Treasurer.

FRANK T. EMERSON,  
Sec'y and Gen'l Manager.

-- THE --

# Western Seed and Irrigation Co.

## WATERLOO, NEB.

### Seed Growers for the Wholesale Trade Only.